



Eventim Apollo

HAMMERSMITH

World
THE
LIVE MUSIC AND ENTERTAINMENT
famous
DESTINATION

A LEGENDARY

Art Deco

VENUE

Located in Hammersmith, West London, the Eventim Apollo is one of the UK's largest and best preserved Art Deco theatres.

It first opened its doors on 28th March 1932 as the Gaumont Palace cinema and was designed by renowned theatre architect Robert Cromie, who also designed the Prince of Wales Theatre in Central London.

In August 2012, AEG Live and CTS Eventim entered into a joint venture to purchase the venue. They immediately got the ball rolling on refurbishment plans to return the venue to its former glory.





Event Space

AUDITORIUM THEATRE STYLE

Stalls Auditorium Seated Capacity: 1387

Plus 16 accessible seating positions on raised platforms

Circle Balcony Seated Capacity : 1924

Stage size:

16.10m (52'9) wide (DSE)

19.2m (63') wide at proscenium

26.76m (87'9") behind proscenium

Lighting bars:

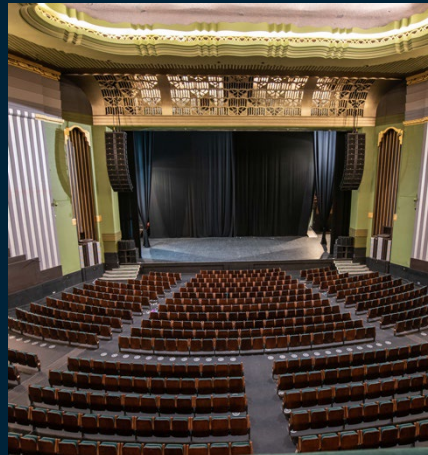
40 double purchase counterweight

Flying point:

Up to 16 on grid over stage

12 points front of arch / 12 auditorium

1 tonne per point





Event Space

AUDITORIUM FLAT FLOOR

Stalls Seated Dining Capacity (10x 5ft 6"): 670

Standing Reception Capacity: 1500

Circle Balcony Seated Capacity : 1924

Stage size:

16.10m (52'9") wide (DSE)

19.2m (63') wide at proscenium

26.76m (87'9") behind proscenium

Lighting bars:

40 double purchase counterweight

Flying point:

Up to 16 on grid over stage

12 points front of arch / 12 auditorium

1 tonne per point



Event Space

AUDITORIUM

PART FLAT FLOOR

With the back section of our flat floor in place we can work with two different capacity options:

Option 1:

Stalls Auditorium Seated Capacity: 680

Flat Floor Standing Capacity: 800

Option 2:

Stalls Auditorium All Standing Capacity: 2500

Circle Balcony Seated Capacity: 1924

Flying point:

Up to 16 on grid over stage

12 points front of arch /

12 auditorium

1 tonne per point

Lighting bars:

40 double purchase counterweight

Stage size:

16.10m (52'9") wide (DSE)

19.2m (63') wide at proscenium

26.76m (87'9") behind proscenium

Event Space

FOYER AND CIRCLE BARS

The two-level foyer is a perfect breakout space for drinks receptions or after-show parties. Just like the auditorium, this versatile area has been spec'd out with ultramodern lighting and sound equipment that compliments the stunning Art Deco features. Here you'll find a unique terrazzo floor, decorative windows and friezes by the artist Newbury Abbot Trent.

Foyer Capacities:

Stalls Foyer: 400

Circle Foyer: 400

Combined Capacity: 800



Venue HIRE Rate

Please get in touch for your bespoke
event quote

Included in your event day hire rate

- Exclusive hire of our Grade II* Listed venue from 9am
- Licenced until 1am
- Sound package
- Technical Manager
- Dedicated Event Manager
- Basic Security personnel
- FOH & Cloakroom personnel
- 10 backstage dressing rooms/production offices
- Event first aid
- Event cleaner
- Full branding potential
- 6 x digital poster sites across the front of the venue
- Service yard for production parking and loading bay

Additional Costs

- Additional sound equipment (if necessary)
- Lighting and Production
- Additional Technical Staff (Flymen/Riggers)
- Furniture
- Food and Beverage

Sound Package

INCLUSIONS

PA System

- L'acoustics K2 line array in stereo left and right hangs
- 12 of L'acoustics K2 speaker cabinet's (Flown)
- 6 of L'acoustics SB28 Sub Bass cabinets (Ground stacked)

FOH Control and Workstation

- 1 of Digico SD11 Digital Console
- 48 mic/line in / 16 out
- Tascam CD-RW900SL Recorder/Player

Front Fills: Left Right & Centre

- 4 of L'acoustics ARCS
- 3 of L'acoustics 8XT cabinet's

Bar and Foyer System

- 12 of L'acoustics 8XT

Upper Circle Fills

- 3 of L'acoustics Kara

Under Circle Fills

- 6 of L'acoustics ARCS

Lighting and Video

All lighting and video to be hired in, please contact the Production team for details and recommended suppliers.

Additional Equipment and Personnel

We can arrange additional equipment and staff as required for your event. Our suppliers provide us with competitive quotes for audio, lighting, video, staging, backline and SFX for all clients.



Food AND Beverage



PREFERRED CATERERS

We have seven excellent preferred caterers who can provide fast quotes and delicious menu's for your event.

Cooks & Partners

+44 20 7731 5282

info@cooksandpartners.co.uk

cooksandpartners.co.uk

Payne & Gunter

+443301230407

info@payneandgunter.co.uk

payneandgunter.co.uk

Create

+44 20 8944 4900

create.sales@chandcogroup.com

createfood.co.uk

Zafferano

+44 2089059120

info@zafferano.co.uk

zafferano.co.uk

Food By Dish

+44 7572614851

info@foodbydish.com

dishcatering.co.uk

Searcys Events

+44 7901959232

Hello@searcysevents.co.uk

searcysevents.co.uk

Moving Venue

+44 20 8691 6661

greatfood@movingvenue.com

movingvenue.com

KERB Events

+44 203355 6874

hello@kerbevents.com

kerbevents.com

DRINKS PACKAGES

All drinks packages and service is provided in-house by the venue. Please request our package list for further details.

Preferred Suppliers

PRODUCTION

Encore EMEA
+44 (0) 20 8955 6900
matt.herd@encoreglobal.com
encore-emea.com

FURNITURE HIRE

Options
+44 845 000 2244
info@options.net
options.net

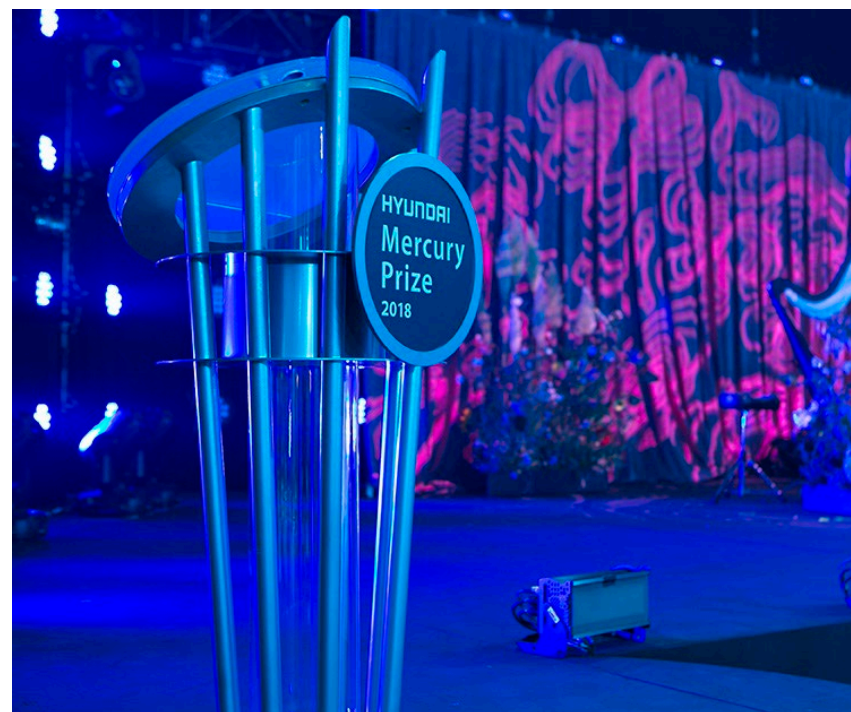
Well Dressed Tables & Spaceworks
+44 20 8545 6000
enquires@spaceworks.co.uk
spaceworks.co.uk

BRANDING

Mountain Print
02393430069
info@mountainprint.co.uk
mountainprint.co.uk

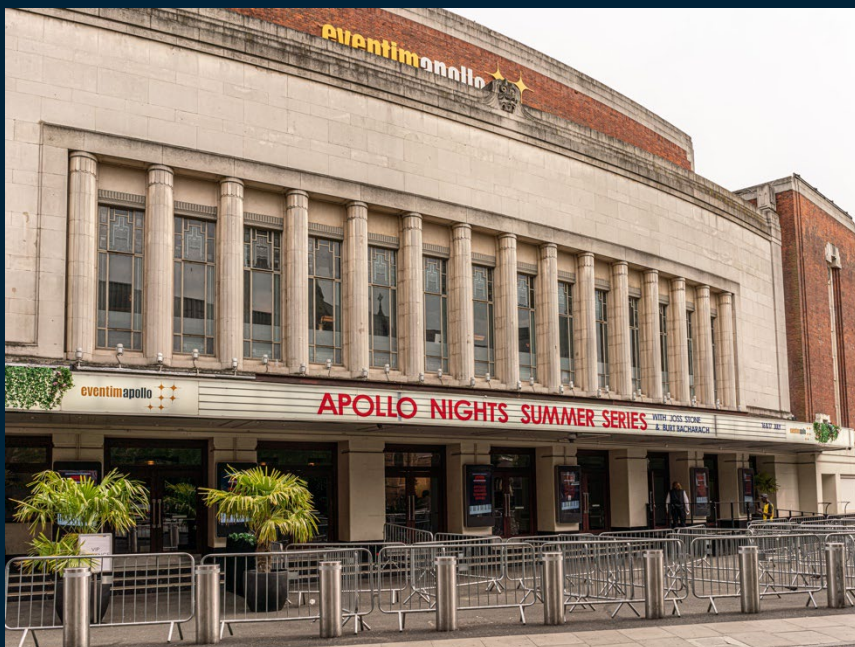
FLORISTS

In Water Flowers
Jayne Colquhoun
Marielle Carola
+44 20 7724 9985
jayne@inwaterflowers.co.uk
mariella@inwaterflowers.co.uk
inwaterflowers.co.uk



Hit THE ROAD Jack

Whether you're coming by car, tube or bus the Eventim Apollo is easy to get to and from at any time of the day or night. Just follow these handy instructions.



PUBLIC TRANSPORT

The Eventim Apollo has excellent public transport links and is a two-minute walk from the Hammersmith and City, District and Piccadilly Line underground stations.

These provide quick and direct links to central London as well as Victoria, Paddington and Kings Cross mainline train stations and Heathrow airport.

Hammersmith Broadway Bus Station is two minutes away and also provides numerous services into London and beyond.

TAXIS AND MINICABS

There is a black cab rank at the entrance to the Broadway Shopping Centre two minutes' walk from the Eventim Apollo. We also have a good relationship with our local mini cab firm who can organise group bookings if you contact us in advance.

PARKING

We're outside the congestion zone so you won't have to pay for using the road to reach us. Once you're here you'll find a 24-hour car park behind the nearby Kings Mall that accommodates 1,000 cars.

When we say 24-hour, we actually mean it can be entered up until 8pm, although cars can be collected anytime.

Meanwhile, Novotel London West, located under five minutes' walk from the Apollo, offers great secure car park facilities. Up to 240 bays are available on a first come first served basis from £3 an hour or £1 an hour if you're staying at the hotel.

CATCH SOME Shut Eye

Whilst there are many hotels within easy reach of the Apollo these are some of our favourites. Please mention us when making group bookings for preferential rates.

ACCOMMODATION

Novotel London West

1 Shortlands

W6 8DR

0.5 miles

630 Rooms

4*

(+44) 20 8741 1555

H0737@accor.com

K West Hotel and Spa

Richmond Way

W14 0AX

1.1 miles

219 Rooms

4*

(+44) 20 8008 6600

bookit@k-west.co.uk

Dorsett Shepherds Bush

58 Shepherds Bush Green

W12 8QE

1 mile

317 Rooms

4*

(+44) 20 3262 1026

info.shepherdsbush@dorsetthotels.com

